

# ***FACTOR II, INC***



*Sharing the knowledge*

## ***Intrinsic Coloring***

[\*\*www.factor2.com\*\*](http://www.factor2.com)

# Mold Preparation



**After cleaning the mold of any wax, a separator is applied to the mold. Allow the separator to dry before applying any silicone.**



**F-901**

# Pigments



**The liquid pigments must be sufficiently agitated to disperse the pigment consistently in the medium.**



**FI Pigments**

# Silicone



**Base and catalyst are weighed out in a 10:1 ratio.**



**VST-50**



# Thixo



**By adding Thixo the viscosity of the silicone can be raised to allow easier filling of the mold.**



**A-300-1**

# Pigments



**The liquid pigments are added drop by drop to the silicone. The drops should be noted for future reference.**

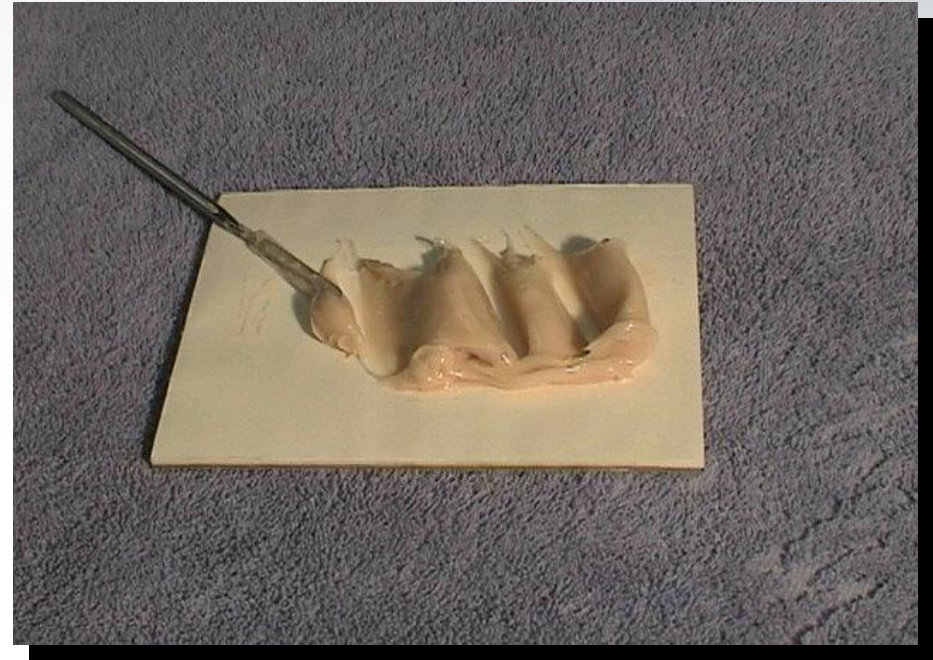


**FI-SK-01**

# Pigments



**The pigments are easily mixed in to the silicone.**

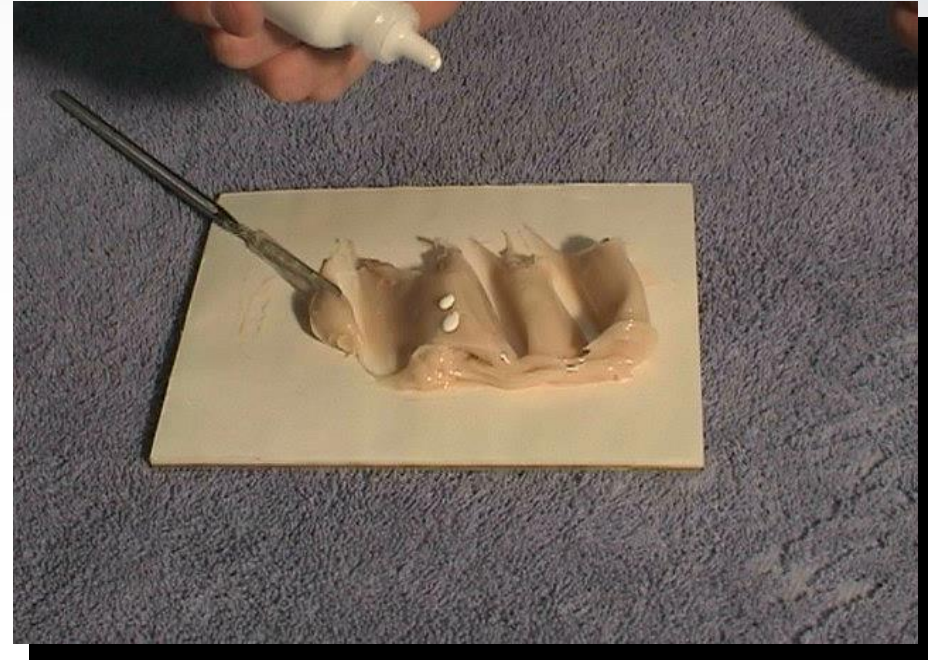
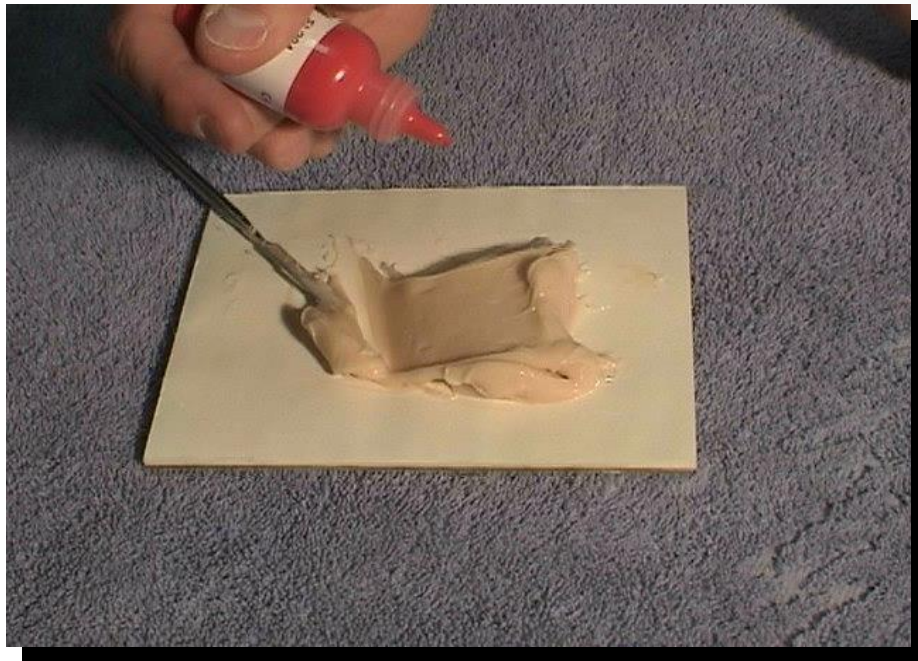




# Pigments



**Different colors can be added to match the patients skin tone.**



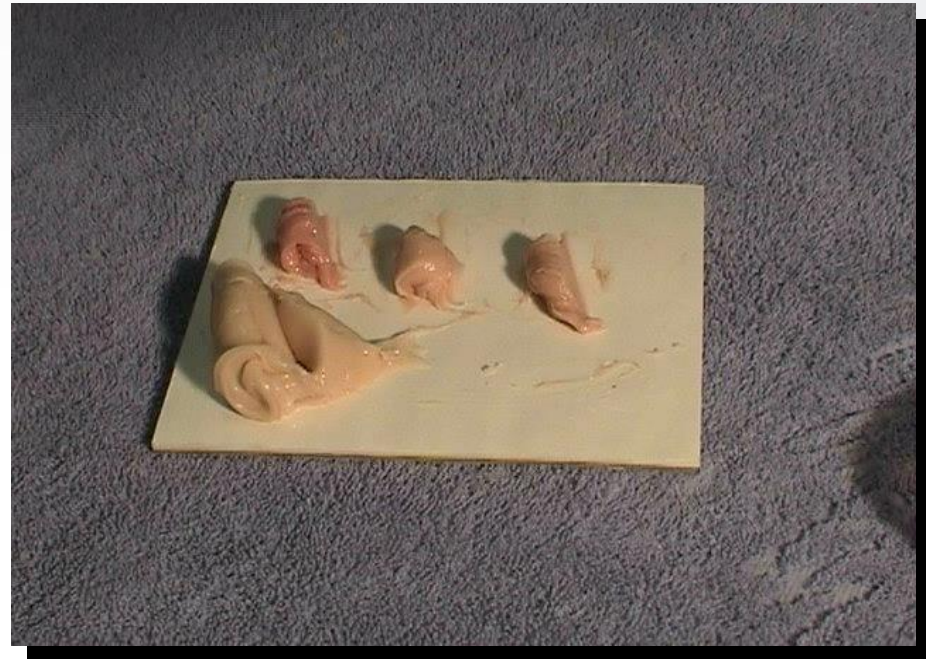
**FI-200 FI-204**



# Swatches



**Small batches are then taken and  
individually colored**



# Filling of the mold



**The piece for behind the helix is filled with silicone. This should be done in layers.**



# Filling of the mold



**Ensure that there is no air trapped in the silicone.**





# Filling of the mold



**The main part of the mold is then filled with silicone.  
Take care as make the different colors blend in to one another.**





# Filling of the mold



**Keep the leading  
edge in a more  
translucent silicone**



# Filling of the mold



**Apply silicone to the  
base of the  
prosthesis**



# Closing the mold



**Insert the middle piece in to the mold.**



# Closing the mold

**Ensure that there is sufficient silicone material in the mold**





# Closing the mold



**Close the mold and  
apply pressure.**

